

Use Case Model

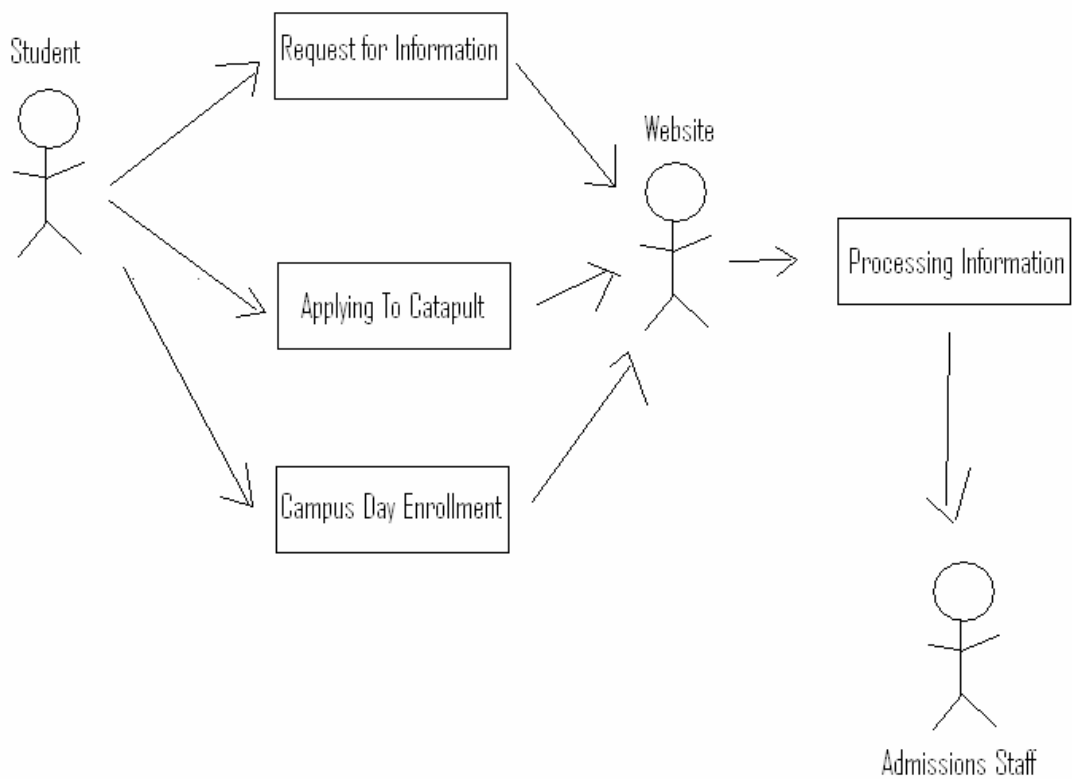
Admissions Application Solution

Team 05 – runnermike.com
Dave Bauman, Drew Bowman, Mike Brandell, Matt Salisbury

Revision History

Date	Version	Description	Edited by
10/10/2005	1.0	Initial Draft	Drew Bowman

1 Use-Case Diagram



2 Use Cases

Item	Value
Use-case name	Request for information
Brief description	A person that would like to receive information about Rose-Hulman Institute of Technology
Actor(s) involved	The person interested, the website
Basic flow of events	A person will access the Rose-Hulman website and begin filling out an information form. After completing the form correctly, an e-mail will be sent to the admissions staff detailing information about the student. Once the admissions staff verifies the information submitted is correct, he will begin receiving information about Rose-Hulman Institute of Technology.
Alternate flow(s) of events	One alternate flow would be that the person does not fill out the form with the correct information. He will receive an e-mail from the admissions staff highlighting the errors the person may have made.
Pre-conditions to use case	The person has internet access and has an e-mail address.
Post-conditions of use case	The interested person will receive information about Rose-Hulman Institute of Technology.
Special requirements	
Item	Value
Use-case name	Applying to catapult
Brief description	This describes the process for applying to Operation Catapult
Actor(s) involved	The person interested, the website
Basic flow of events	A person will access the Rose-Hulman website and begin filling out an application form. After completing the form correctly, an e-mail will be sent to the admissions staff detailing information about the student. Once the admissions staff verifies the information submitted is correct, he will be notified whether he has been accepted for Operation Catapult.
Alternate flow(s) of events	One alternate flow would be that the person does not fill out the form with the correct information. He will receive an e-mail from the admissions staff highlighting the errors the person may have made.
Pre-conditions to use case	The person has internet access and has an e-mail address.
Post-conditions of use	The applicant will be notified whether he/she has been

case	accepted for Operation Catapult
Special requirements	

Item	Value
Use-case name	Enrolling in Campus Day
Brief description	This describes the process for enrolling for Campus Day
Actor(s) involved	The person interested, the website
Basic flow of events	A person will access the Rose-Hulman website and begin filling out an application form. After completing the form correctly, an e-mail will be sent to the admissions staff detailing information about the student. Once the admissions staff verifies the information submitted is correct, he will be sent information regarding Campus Day
Alternate flow(s) of events	One alternate flow would be that the person does not fill out the form with the correct information. He will receive an e-mail from the admissions staff highlighting the errors the person may have made.
Pre-conditions to use case	The person has internet access and has an e-mail address.
Post-conditions of use case	The applicant will be receiving information about Campus Day
Special requirements	

Item	Value
Use-case name	Processing Information
Brief description	This describes the how the Admissions staff processes the information when forms are submitted via the website
Actor(s) involved	The Admissions staff, the website, the person interested
Basic flow of events	When a person fills out and submits a form online, an e-mail is sent to the admissions office. The admissions office will begin to check the information to make sure it is correct. Once the information is verified, the admission staff will add the student to the admission's database.
Alternate flow(s) of events	One alternate flow would be that the person does not fill out the form with the correct information. The admissions staff will e-mail the individual with a specific

	question related to their form.
Pre-conditions to use case	The person has internet access and has an e-mail address.
Post-conditions of use case	The student will be added to the admission's database and will begin receiving information from Rose-Hulman Institute of Technology
Special requirements	